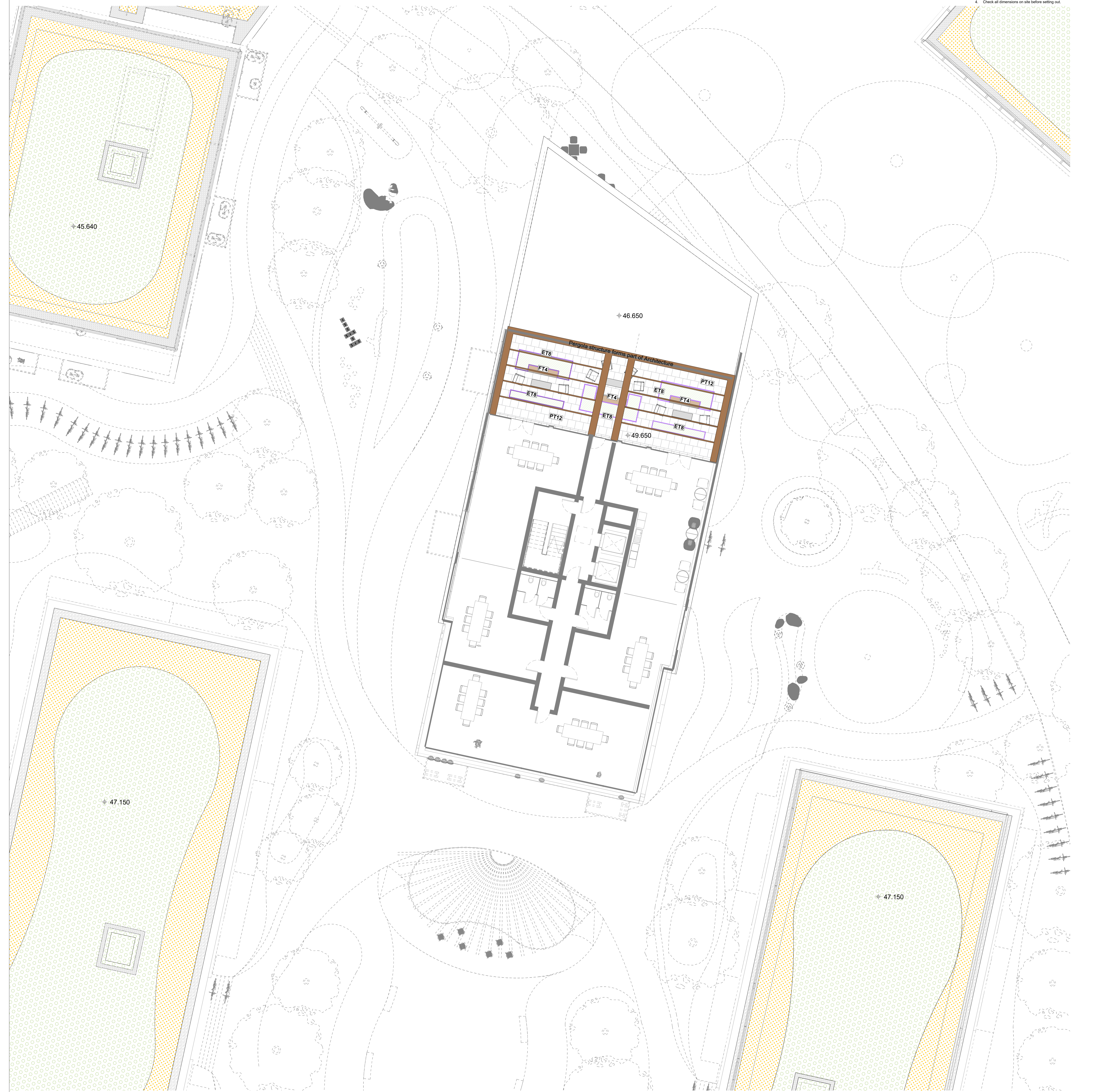


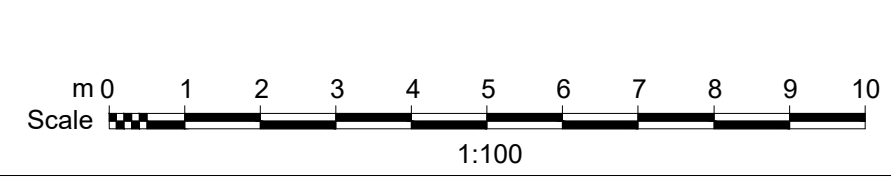
DISCLAIMER
 1. This drawing is the property of Cameo & Partners Ltd.
 2. It must not be copied or reproduced without written consent.
 3. Do not scale from this drawing.
 4. Check all dimensions on site before setting out.



- KEY**
- PROPOSED ROOFSCAPE MATERIALS
 - Site Boundary
 - Paving Type 12 - Porcelain Tiles
 1200x600, 600x600 (100, 600x600 (2) 200mm (10))
 1200x600 (100) - Under Approval
 - Paving Type 16 - Stone Edge to Green Roofs
 600x600, Natural Stone Green Approval 15.0mm
 Supplier: TBC or Similar Approval
 - ET8
 Edge Type 8 - Glass Stone Floor Cladding
 600x600, 1500x600, F40, TBC
 Supplier: TBC or Similar Approval
 - FT4
 Furniture Type 4 - Secondary Service, Front to Front
 Supplier: Orca or Similar Approval
 Substructure: Replicate on, Taper top and steel frame
 - PT12
 Proposed Overhead Roof Panels
 Panels: Made to Working Drawing
 Supplier: TBC or Similar Approval
 - Proposed Seating (planting)
 Proposed: TBC
 Supplier: TBC or Similar Approval
 - Proposed Ornamental Planting
 Proposed: TBC
 Supplier: TBC or Similar Approval
- NOTE:**
 Overhead pergola structure forms part of 8th Floor Architecture



01	Issued for Planning With Accessible Roof Change	HM 25.10.2022
00	Issued for Planning	VS 22.08.2022
rev	details	By date



Dalguise House, Monkstown

General Arrangement Plan - 8th Floor

1:100@A0	22.08.22	MM	VS
Drawing No.			Revision
C0135 L108			01
Purpose of Issue:			
P = design information / P = planning / T = tender / C = construction / B = as built			
Drawing sheet size - A0			