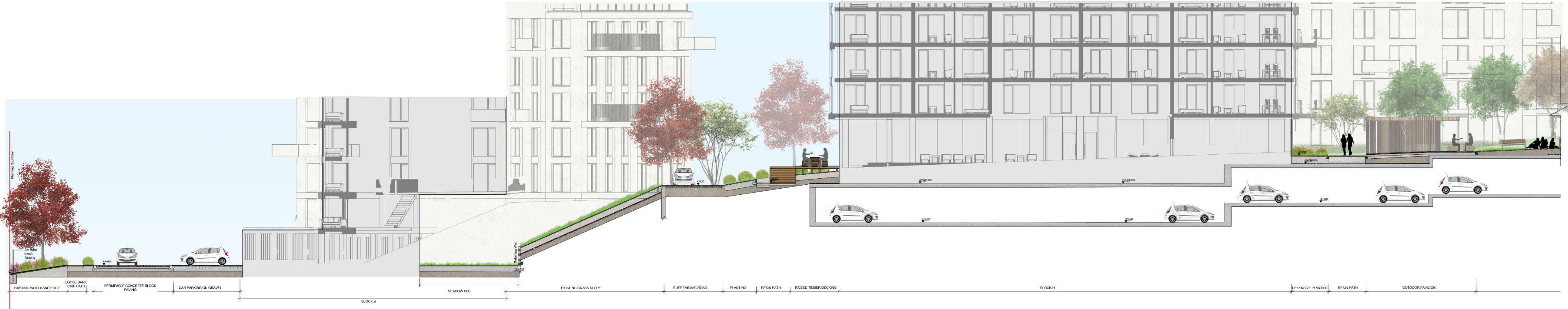


Disclaimer
 1. This drawing is the property of Cameo & Partners Ltd.
 2. It must not be copied or reproduced without written consent.
 3. Do not scale from this drawing.
 4. Check all dimensions on site before setting out.



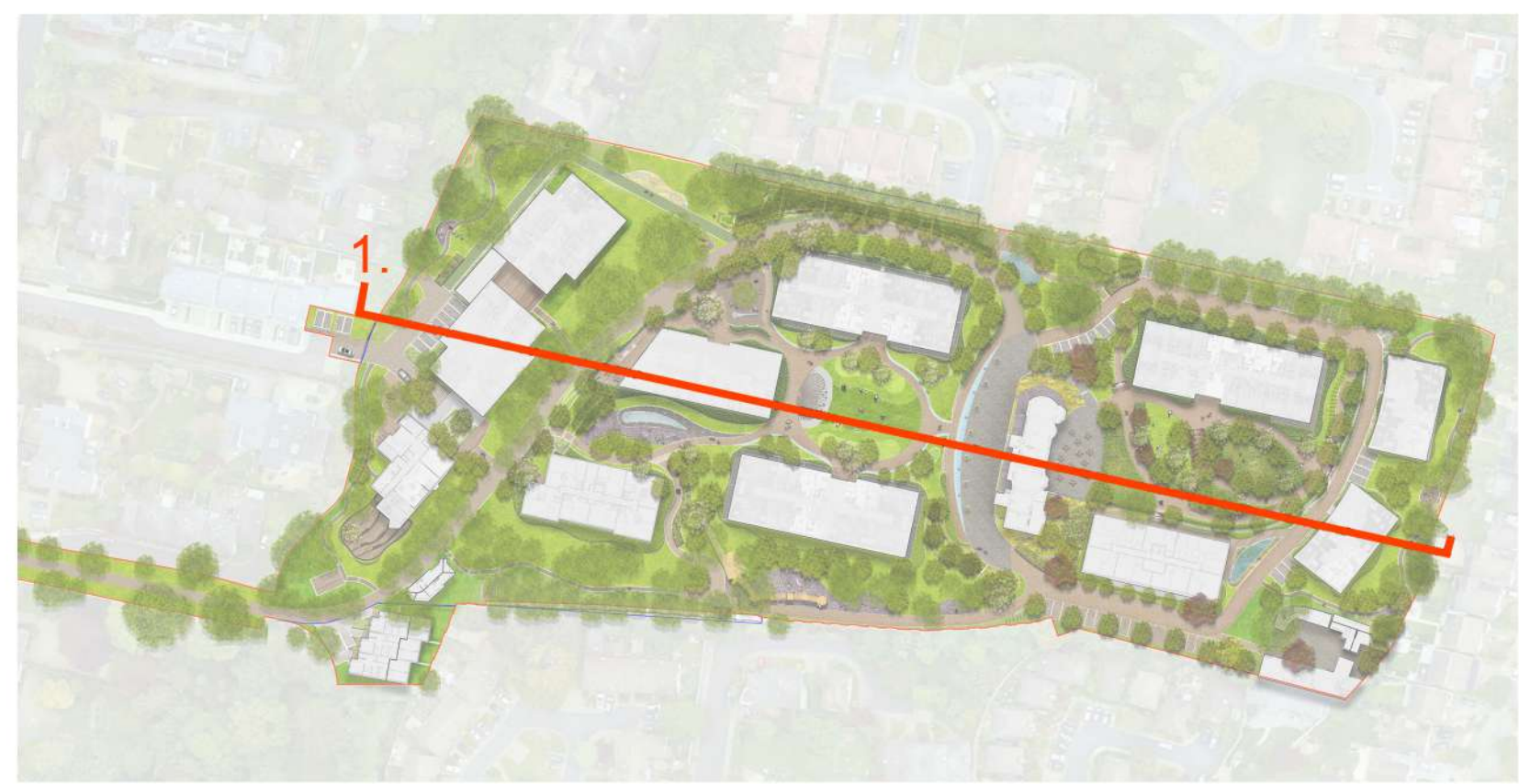
1 Section 1 - Part 1 of 3
 scale 1:200 @A1



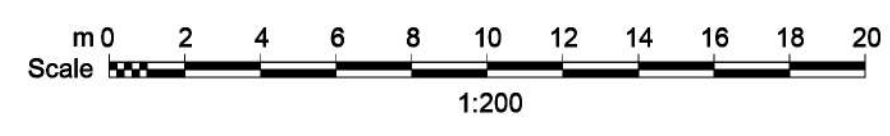
2 Section 1 - Part 2 of 3
 scale 1:200 @A1



3 Section 1 - Part 3 of 3
 scale 1:200 @A1



Key Location Plan



Cameo & Partners
 design studio
 Cargo Works - ET 5.07
 1-2 Hatfields
 Waterloo
 London
 SE1 9PG
 Company Registered No: 8756613. T: 0203 1760 130 E: info@cameoandpartners.com

00	Issued for Planning	vs	22.08.2022
rev	details	by	date
Project Dalguse House, Monkstown			
Drawing Section 1			
Scale 1:200@A1	Date 22.06.2022	Checked By VS	Drawn By AG
Drawing No. C0135 L500		Revision 00	
Purpose of Issue. P			
D = design information / P = planning / T = tender / C = construction / B = as built			
Drawing sheet size - A1		© Cameo & Partners	